



時代



廣場

Hong Kong Times Square

SEIZE THE PULSE OF SUCCESS

TIMES SQUARE
WHERE VISIONARIES
THRIVE

INTRODUCTION

ALL YOU NEED UNDER ONE ROOF

Times Square in Causeway Bay, Hong Kong, is a notable mixed-use commercial hub combining office spaces, shops, restaurants, entertainment options, and parking, all conveniently located under one roof.

THE PINNACLE OFFICE WITH GREAT ACCESSIBILITY & STUNNING VIEW

The Twin Tower Grade A office offers 1 million sq ft of premium office space with direct MTR access, multiple transit options, and a dedicated car park. Strategically situated at the heart of Causeway Bay, with stunning harbour and racecourse views from the office premises, making it an attractive destination for multinational corporations.

TOP-NOTCH PROPERTY MANAGEMENT & SUSTAINABILITY INITIATIVES

Times Square Limited's professional management guarantees a safe, and secure work setting with a focus on facilities, sustainability, and tenant relations to enhance the business environment. With high dedication to green and healthy work place, Times Square is recognized with prestigious awards on eco-friendly initiatives.

Located centrally with varied amenities and outstanding management, Times Square is ideal for companies desiring reputable and convenient office space in a prime commercial area.

SPECIFICATIONS



TOTAL GFA (SF)

~1,017k



TYPE OF AIR-CONDITIONING SYSTEM

Variable Air Volume (VAV) System with UV Sterilizers for AHUs



LEED Platinum WELL Health-Safety Rating



TYPICAL FLOOR AREA (SFG)

Tower One ~17,186 Tower Two ~19,510



FLOOR LOADING

3Kpa (Featured Floors up to 4Kpa)



NORMAL A/C SUPPLY HOURS (EXCEPT PUBLIC HOLIDAYS)

Mondays to Fridays 08:30 - 19:00
Saturdays 08:30 - 14:00



OFFICE FLOOR

Tower One 14/F - 47/F (32 Storeys)
Tower Two 15/F - 39/F (24 Storeys)



CEILING SYSTEM

Metallic Ceiling System with LED lighting



CEILING HEIGHT MM (FT)

Floor to Floor 3,525 (11'6") (Featured Floors up to 4,300(14'1"))
False Ceiling 2,450(8') (Featured Floors up to 2,750(9'))

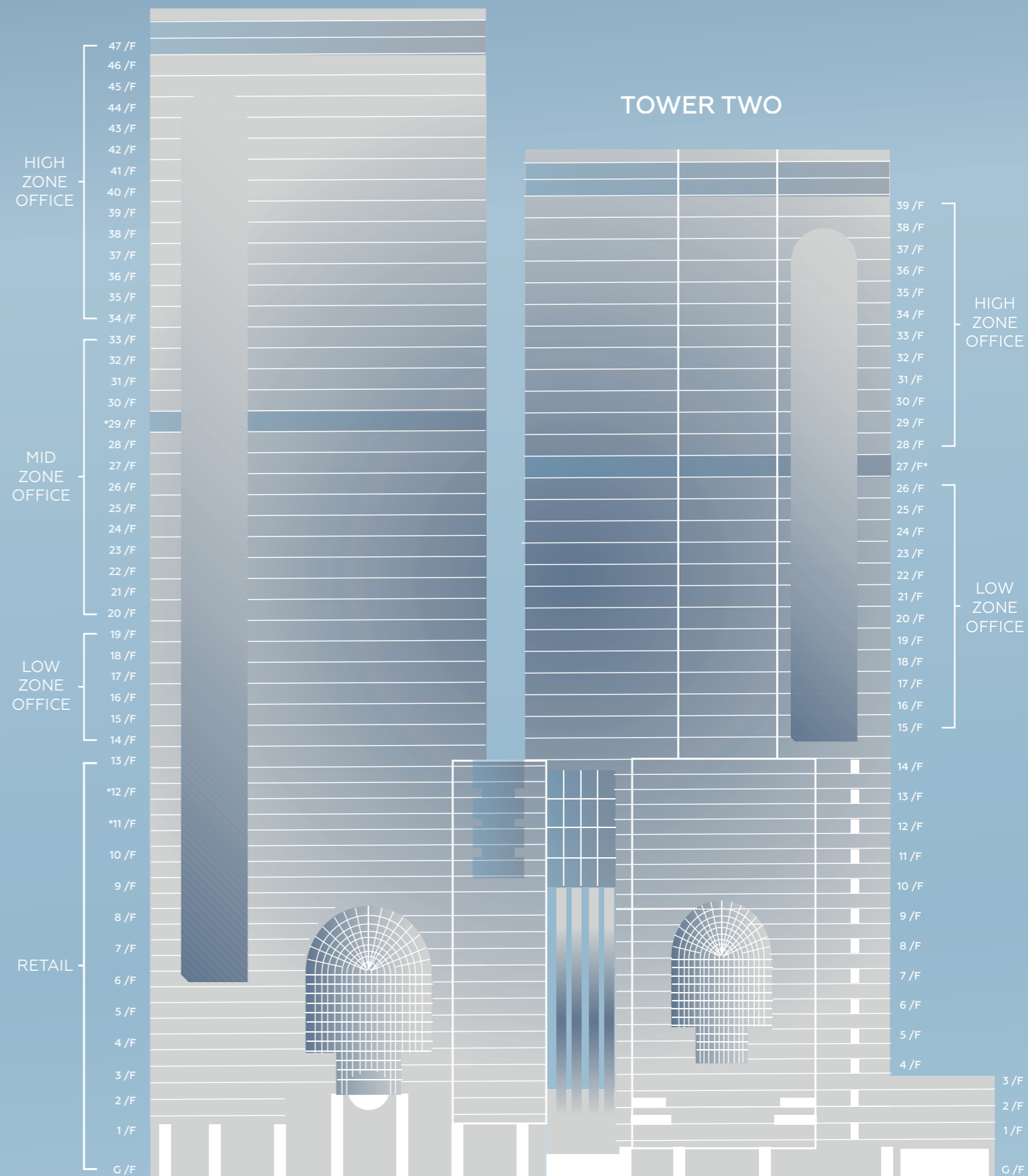


CARPARKING SPACE

700 (EV chargers available on designated parking spaces)

TOWER ONE

TOWER TWO





SEA VIEW

Surveying Victoria Harbour from lofty skyscrapers, the modern urban panorama reveals its allure.



Overlooking Happy Valley Racecourse from the skyscrapers, the scene of horse racing in full swing is exciting.

RACECOURSE VIEW



CULINARY DELIGHTS AT YOUR FIRST STEP

Times Square offers an array of dining options suitable for business meals or social gatherings, providing convenience and diversity. The Food Forum on levels 10 to 13 presents upscale restaurants with Chinese, Asian, and Western dishes. Additionally, there are cafes and snack bars for tenants to enjoy coffee, pastries, or quick bites.



SAVOUR THE ULTIMATE SHOPPING EXPERIENCE

Times Square features over 230 international brands, offering a variety of shops including fashionable clothing, fine jewelry, contemporary electronics, and premium sports gear, all under one roof. Enjoy a state-of-the-art and convenient shopping experience with access to the newest products available.



BALANCE LEISURE & WORK EFFORTLESSLY

Times Square offers a diverse entertainment hub where you can relax and de-stress post-work with ease. It houses a co-baking area, a VR zone, and a cinema within the complex, providing activities for personal downtime or family enjoyment. Whatever your leisure needs, Times Square provides options to unwind and enjoy your leisure time.



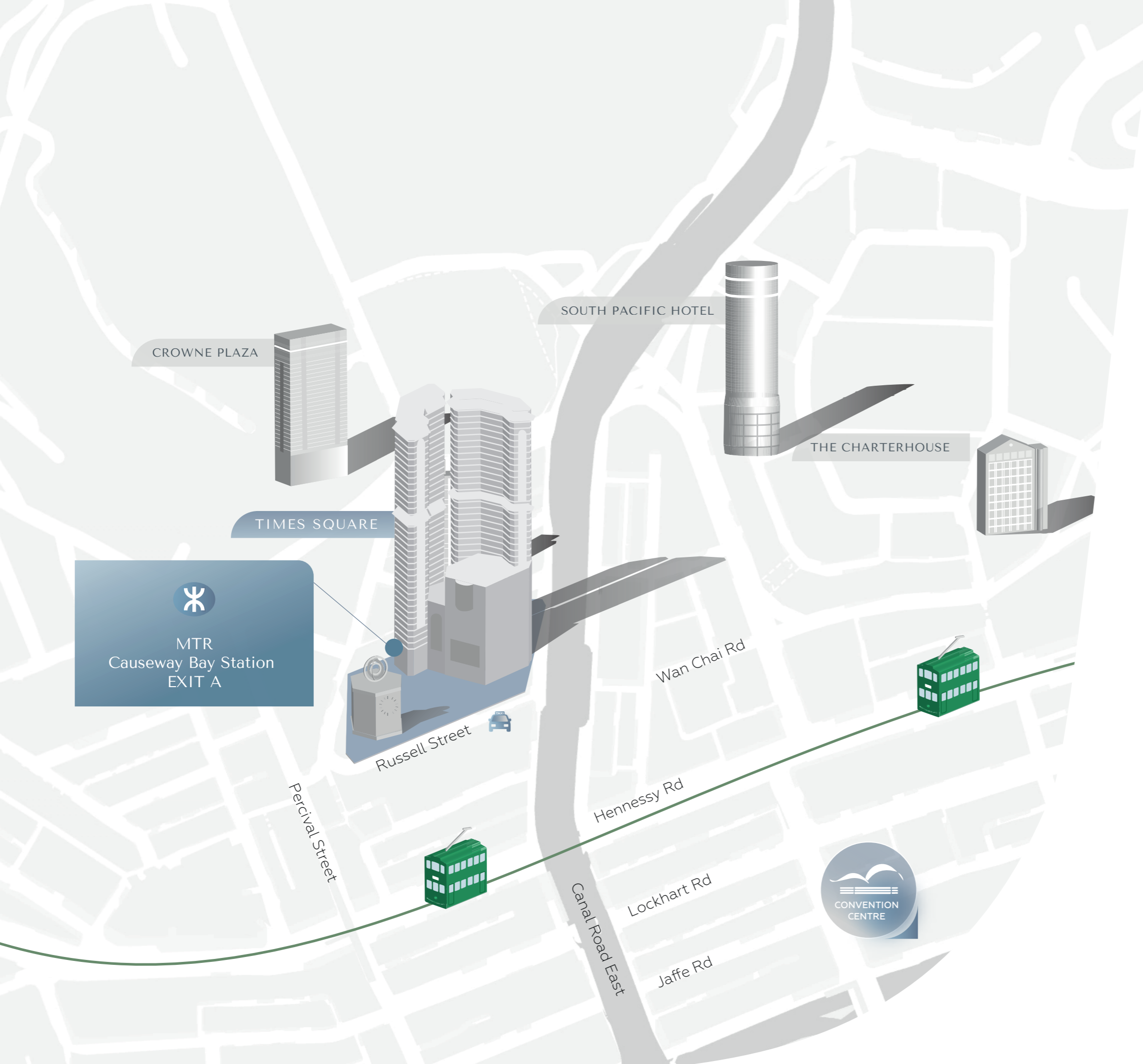
HOUSING BIG NAMES

Times Square houses leading multi-national firms from sectors like IT, media, finance, professional services, insurance, beauty, and retail which numbers of them are Fortune 500 and Global 500 companies. It further enhances its prestige as a prime location for top-tier businesses seeking distinguished and well-situated office spaces in a major commercial hub.



MEMBERSHIP - OFFICE CLUB

Office Club is a complimentary membership program designed exclusively for office workers and retail staffs at Times Square who seek to elevate their work and leisure experiences. As a member of the Office Club, you can enjoy an array of year-round offers on dining and shopping, ensuring exceptional value for your everyday needs, as well as exclusive access to special events such as flash sales that are not to be missed.



ACCESSIBILITY

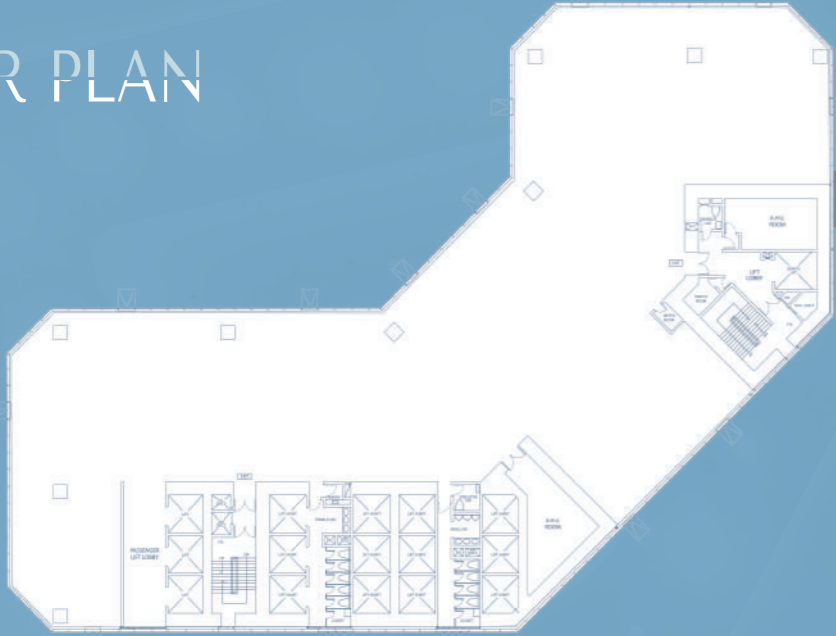
Times Square, located in Causeway Bay's vibrant centre, offers unparalleled accessibility through direct MTR linkage, and readily reachable by means of public transportation option.

Its own carpark operates around the clock and offers 700 parking space for the convenience of Tenants and visitors.

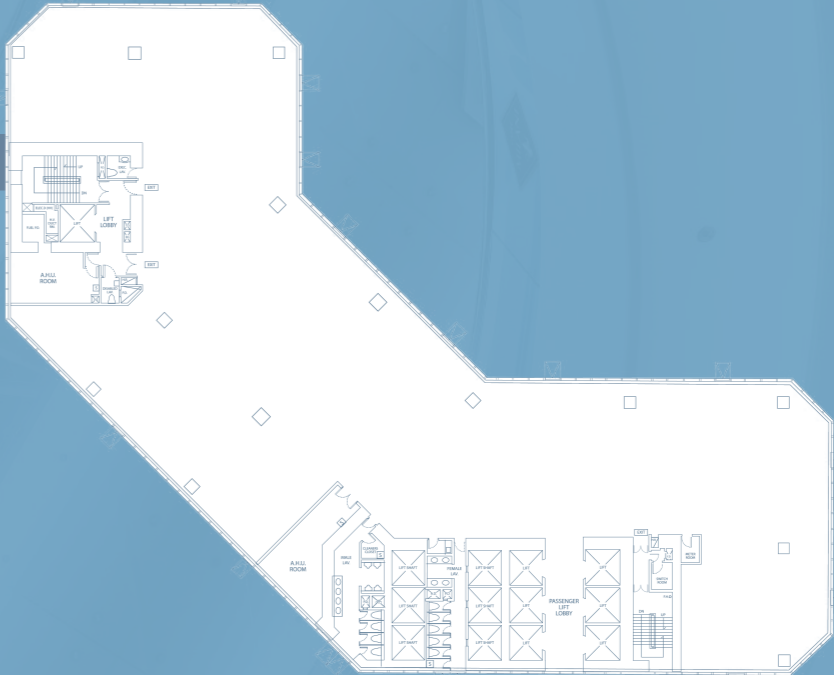
GETTING AROUND

| | |
|---|---------|
| ADMIRALTY | |
| 5 MINS | 11 MINS |
| CENTRAL | |
| 7 MINS | 17 MINS |
| HIGH SPEED RAILWAY HK WEST KOWLOON STATION | |
| 27 MINS | 15 MINS |
| HK INTERNATIONAL AIRPORT | |
| 40 MINS | 38 MINS |
| CONVENTION CENTRE | |
| 11 MINS | 7 MINS |

FLOOR PLAN



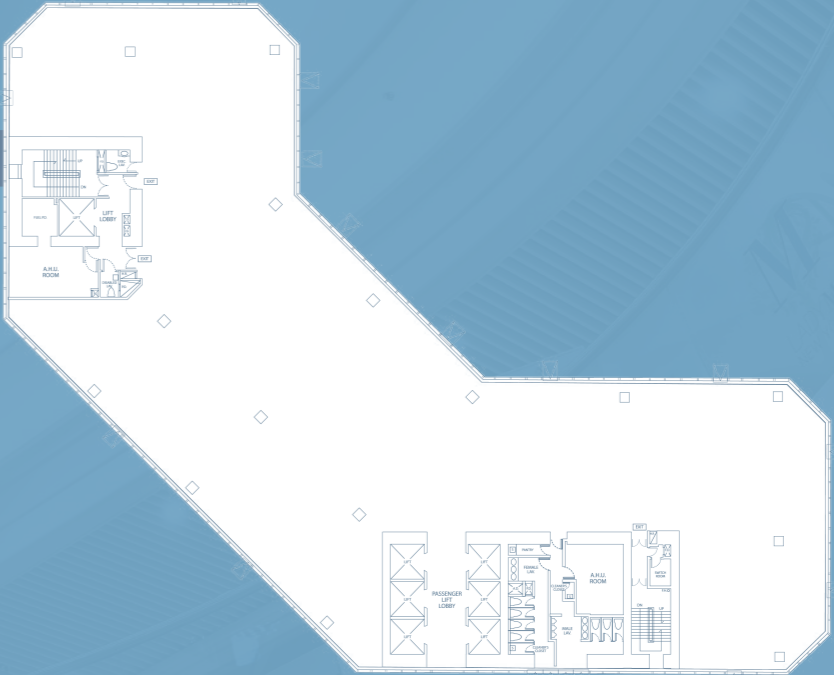
Tower One
Low Zone
14-19/F



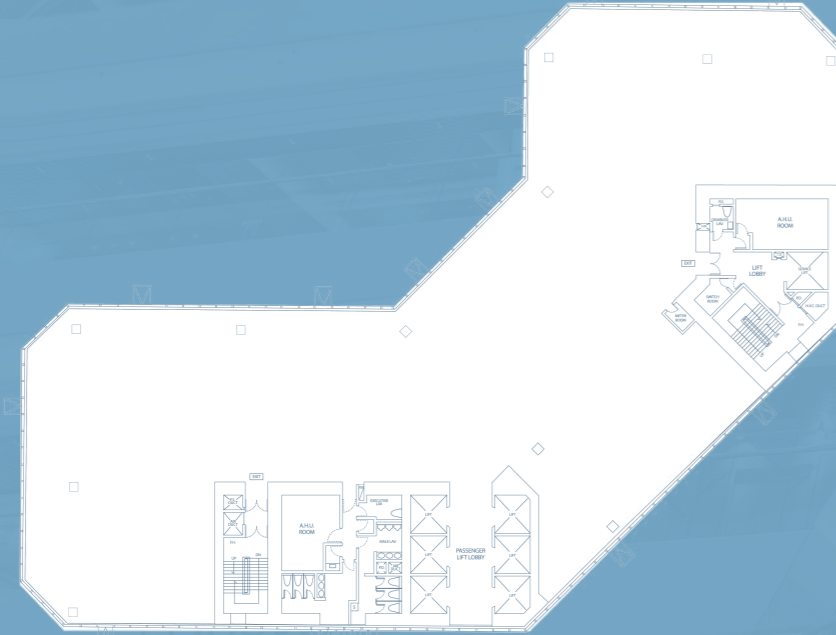
Tower Two
Low Zone
15-26/F



Tower One
Mid Zone
20-33/ F



Tower Two
High Zone
28-39/ F



Tower One
High Zone
34-47/ F

LEASING ENQUIRIES

Email

timessquareoffice@harrimanleasing.com

Address

Suites 1501-6, Tower Two,
Times Square, 1 Matheson Street,
Causeway Bay, Hong Kong

Hotline

(+852) 2118 8888

Our Website

office.timessquare.com.hk

